

# Biostatisticians in the Netherlands

Six reasons to join BMS-ANed:

- (1) access to an extensive professional network of biostatisticians;
- (2) a strong professional association to defend biostatisticians' interests;
- (3) access to relevant digital and printed information;
- (4) organization (or support in organizing) of conferences, trainings and other activities;
- (5) registration as a biostatistician;
- (6) a discount on participation in the Channel Network Conference.

For students and PhD students, the first two years of ANed membership are free.

Would you like to know more? Please visit our web site [www.bms-aned.nl](http://www.bms-aned.nl), or talk to one of the members of the board.

Secretary: Dr. Maarten Schipper  
RIVM, PO Box 1, NL-3720 BA Bilthoven, The Netherlands  
[maarten.schipper@rivm.nl](mailto:maarten.schipper@rivm.nl)



BMS-ANed: the professional biostatistical association

## Biostatistics

Are you a biostatistician working at a university, a company or a research institute? Then BMS-ANed is *the* professional association for you! Are you interested in biostatistics as an epidemiologist, biologist, bioinformatician or otherwise? In that case, BMS-ANed also has a lot to offer!

## Activities

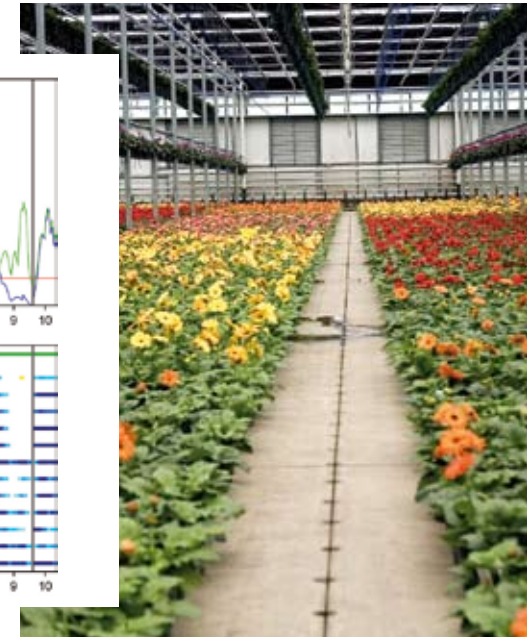
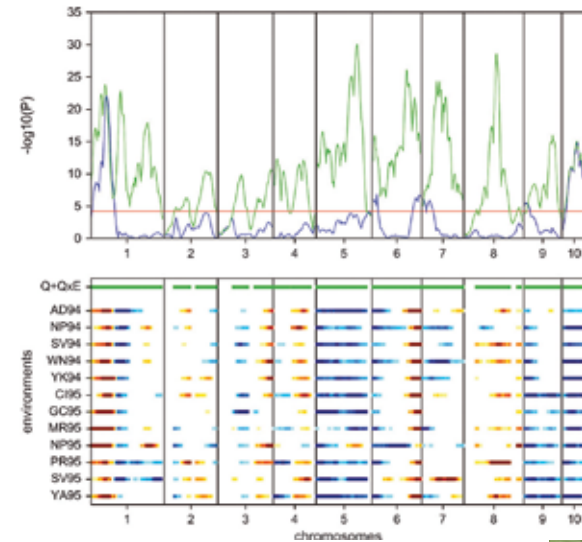
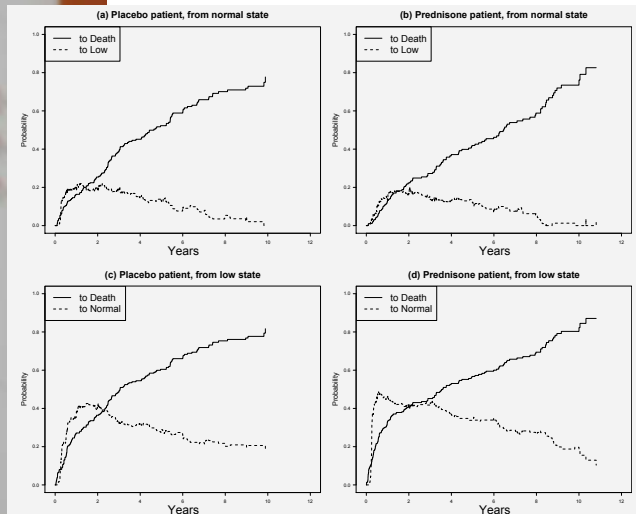
BMS-ANed aims to promote the study and application of statistics in medicine, life sciences and related fields. We organize scientific conferences and manage the biostatisticians' register in order to guarantee professional standards. Every two years, the Biometry Award is given to the best publication in the field of biometry. BMS-ANed also participates in the organization of the biennial international Channel Network Conference. Moreover, our working groups organize meetings regarding various subdisciplines of biostatistics: medical statistics, statistics in the life sciences, and statistics and data management in the pharmaceutical industry.

## Professional associations

BMS-ANed consists of two parts: BMS or the Biometric Section of the Netherlands Society for Statistics and Operations Research (VVS: Vereniging voor Statistiek en Operationele Research), and ANed, the Dutch section of the International Biometric Society (IBS). You can join either BMS or ANed, or both.

## Benefits

If you join BMS, you will receive the VVS journals *Statistica Neerlandica* and *STATOR*. If you choose ANed, you will be sent the IBS's *Biometrics* and *Biometric Bulletin*. BMS-ANed gives you access to national as well as international mailing lists on biostatistical activities, job opportunities and other news.



# Biostatisticians in the Netherlands